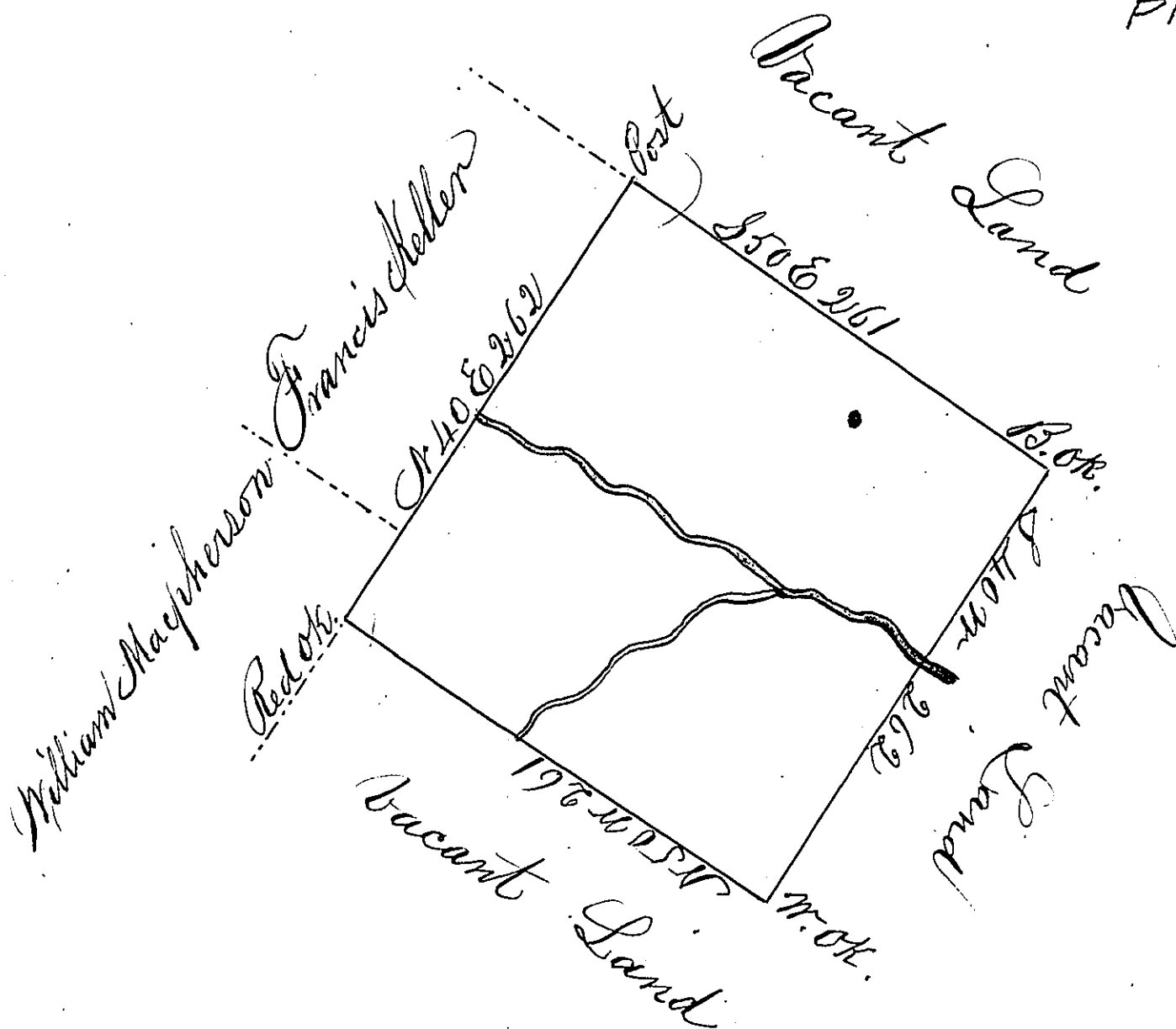


Dingman & Del.
PIKE.



By virtue of a warrant dated the 8th September
1786. Surveyed the 22^d September 1786 to Conrad
Hans the above described tract of land, situate
on a small creek called Coneshoughkill about
one mile from Delaware River in upper
Smithfield Township Northampton County
containing Four hundred and three acres
thirty one perches & the allowance of
six A. Cent &c.

To John Lukens Esqr. }
Surveyor General } J. Geo. Palmer

IN TESTIMONY that the above is a copy of the original remaining on file in the
Department of Internal Affairs of Pennsylvania, made con-
formably to an Act of Assembly approved the 16th day of
February, 1833, I have hereunto set my Hand and caused
the Seal of said Department to be affixed at Harrisburg, this

Second day of January 1835.

J. Simpson Africa,
Secretary of Internal Affairs